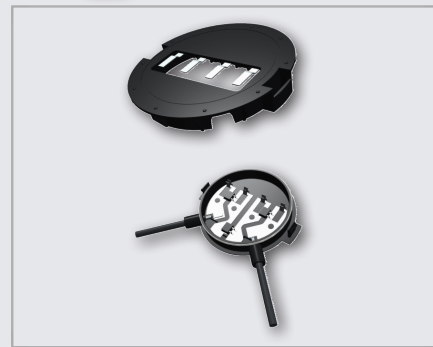


SOLEXUS SOLAR JUNCTION BOX SERIES 1300 CS

Solexus 1300 CS series is a cost-effective, low profile, fast assembly junction box with a circular design. It allows the cables to exit the box in a 90 degree angle.

The click-in cable mounting ensures an excellent pull strength and low profile cable entry. Cooling ribs on the housing increase current rating to over 10 Amps.

1300 CS is available in a version for c-Si back-contact cell modules and standard c-Si modules with ribbons of 7 mm width.



SOLEXUS JUNCTION BOX SERIES 1300 CS SPECIFICATIONS

ELECTRICAL CHARACTERISTICS

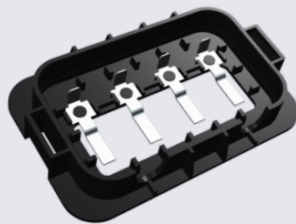
- Rated voltage: TUV:1000V DC / UL:600V DC
- Working voltage 40 V DC
- Contact resistance: $\leq 5\text{m } \Omega$
- Current rating: 10 A / up to 20 A on request
- Safety Level: class II

MECHANICAL CHARACTERISTICS

- Locking mechanism to align top and bottom housing
- Removable top cover
- Ambient temperature range: $-40^{\circ}\text{C}+85^{\circ}\text{C}$
- Dimensions:
 - Box diameter: 125 mm, Flange diameter: 108 mm
- Cable type: 4mm^2 (12AWG) / 6mm^2 (10 AWG) optional
- Cable length: 1 m, other length on request
- Connectors: MC4 compatible / other connectors on request
- Durability: 20 cycles (top cover to base unit)
- Housing material: PPO (Polyphenylene Oxide)
- Housing color: Black
- Flame class: UL94-V0
- Contacts:
 - Material: Copper alloy, Plating Contact Area: Tin (Sn) over Nickel (Ni)
- Cable pull-out force: 500 N
- Spring loaded terminals connect top and bottom part



Ribbon version



Back contact version

ENVIRONMENTAL CHARACTERISTICS

- Halogen free
- RoHS
- Shell protection degree: IP67
- Pollution degree: 3
- Lead-free solder
- Packaging: Tray for base, cardboard for cover

