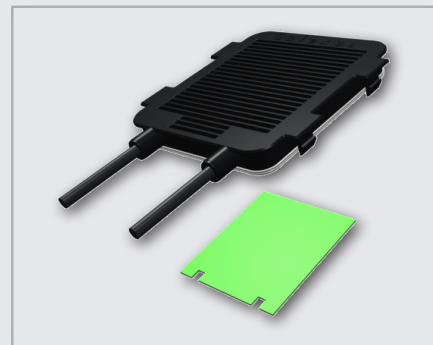
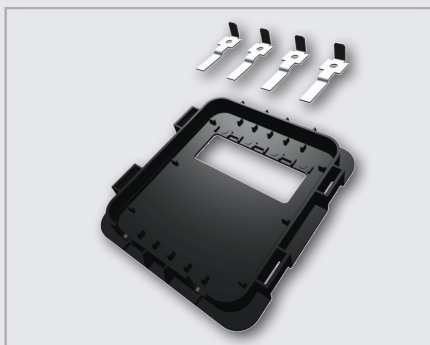
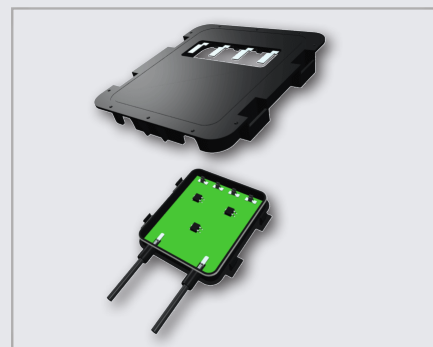
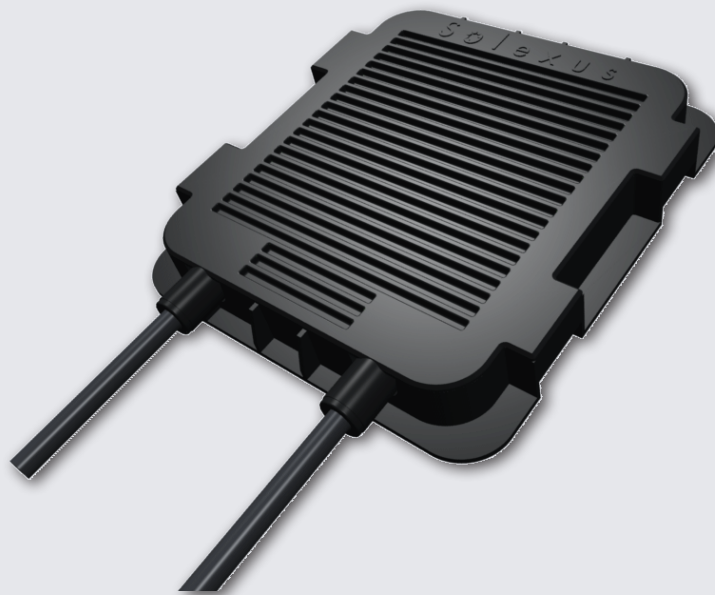


### SOLEXUS SOLAR JUNCTION BOX SERIES 1300 MX

Solexus 1300 MX series is a low profile, fast assembly junction box, designed for mid-size electronic devices such as microinverters, MPP tracking devices and power regulators. The box contains a printed wiring board connected to the cables and the ribbons.

The click-in cable mounting ensures an excellent pull strength and low profile cable entry.

Cooling ribs on the housing and the special thermal material are designed for power dissipation of 20 W and more. The slim design fits in all module form factors. Versions with 1, 2 or 3 cable exits are available.



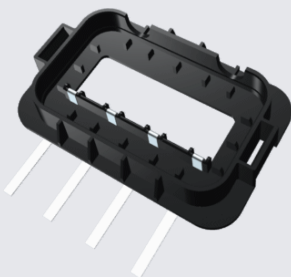
# SOLEXUS JUNCTION BOX SERIES 1300 MX SPECIFICATIONS

## ELECTRICAL CHARACTERISTICS

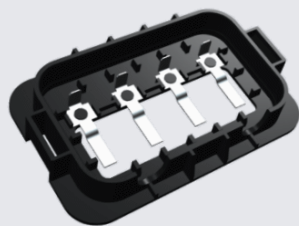
- Rated voltage: TUV:1000V DC / UL:600V DC
- Working voltage 40 V DC
- Contact resistance:  $\leq 5\text{m}\Omega$
- Current rating: 10 A / up to 20 A on request
- Safety Level: class II

## MECHANICAL CHARACTERISTICS

- Locking mechanism to align top and bottom housing
- Removable top cover
- Ambient temperature range:  $-40^{\circ}\text{C}+85^{\circ}\text{C}$
- Box dimensions:
  - Length: 138 mm / Width: 118 mm / Height: 20 mm
- Flange dimensions:
  - Length: 150 mm / Width: 135 mm
- Cable type:  $4\text{mm}^2$  (12AWG) /  $6\text{mm}^2$  (10 AWG) optional
- Cable length: 1 m, other length on request
- Connectors: MC4 compatible / other connectors on request
- Durability: 20 cycles (top cover to base unit)
- Housing material: PPO (Polyphenylene Oxide) / TN220 (Thermopoly), color: black
- Flame class: UL94-V0
- Contacts:
  - Material: Copper alloy, Plating Contact Area: Tin (Sn) over Nickel (Ni)
- Cable pull-out force: 500 N
- Spring loaded terminals connect top and bottom part



Ribbon version



Back contact version

## ENVIRONMENTAL CHARACTERISTICS

- Halogen free
- RoHS
- Shell protection degree: IP67
- Pollution degree: 3
- Lead-free solder
- Packaging: Tray for base, cardboard for cover

