

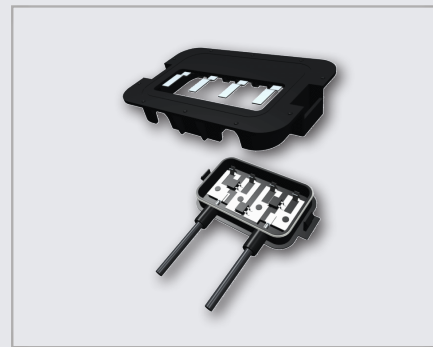
SOLEXUS SOLAR JUNCTION BOX SERIES 1300 XS

Solexus 1300 XS series is a cost-effective, low profile junction box, designed for fast assembly. The junction box is available in a version for standard ribbon configuration and a version for back-contacting crystalline solar cells.

The click-in cable mounting ensures an excellent pull strength and low profile cable entry.

Cooling ribs on the housing increase current rating to over 10 Amps.

A version with thermal materials is available for 20 Amps rating.



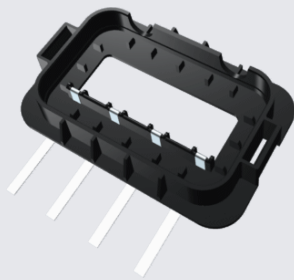
SOLEXUS JUNCTION BOX SERIES 1300 XS SPECIFICATIONS

ELECTRICAL CHARACTERISTICS

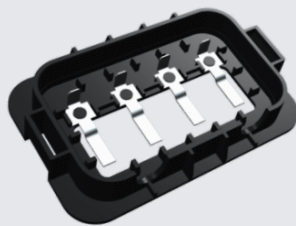
- Rated voltage: TUV:1000V DC / UL:600V DC
- Working voltage 40 V DC
- Contact resistance: $\leq 5\text{m } \Omega$
- Current rating: 10 A / up to 20 A on request
- Safety Level: class II
- Diodes: 3, Schottky

MECHANICAL CHARACTERISTICS

- Locking mechanism to align top and bottom housing
- Removable top cover
- Ambient temperature range: $-40^{\circ}\text{C}+85^{\circ}\text{C}$
- Overall dimensions:
 - Length: 106mm
 - Width: 78mm
 - Height: 19.90mm
- Cable type: 4mm^2 (12AWG) / 6mm^2 (10 AWG) optional
- Cable length: 1 m, other length on request
- Connectors: MC4 compatible / other connectors on request
- Durability: 20 cycles (top cover to base unit)
- Housing material: PPO (Polyphenylene Oxide) or TN220 (ThermoPoly)
- Housing color: Black
- Flame class: UL94-V0
- Contacts:
 - Material: Copper alloy
 - Plating Contact Area: Tin (Sn) over Nickel (Ni)
- Cable pull-out force: 500 N
- Spring loaded terminals connect top and bottom part



Ribbon version



Back contact version

ENVIRONMENTAL CHARACTERISTICS

- Halogen free
- RoHS
- Shell protection degree: IP67
- Pollution degree: 3
- Lead-free solder
- Packaging: Tray for base, cardboard for cover

